

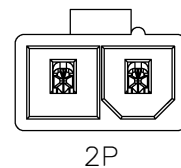
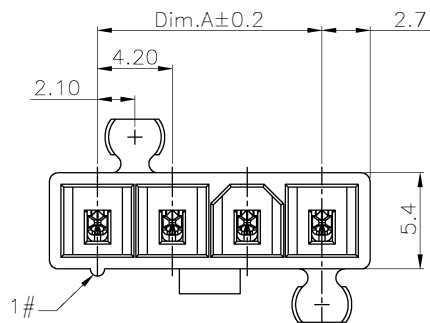
1

2

3

4

5



## Specifications:

Current Rating:9.0A AC/DC  
Voltage Rating:600V AC/DC  
Contact Resistance:10m ohm. Max.  
Insulation Resistance:1000M ohm. Min.  
Withstanding Voltage:1500V AC For One Minute  
Operating Temperature Range:-40°C To +105°C

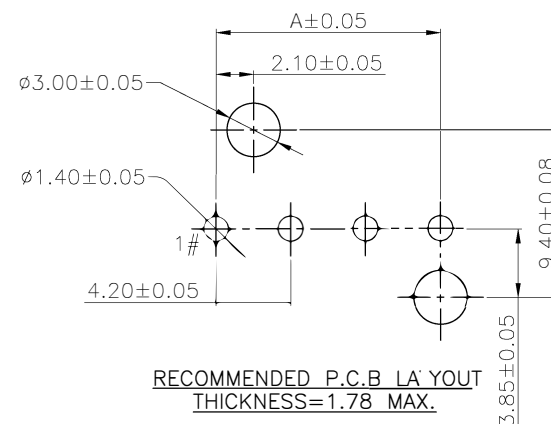
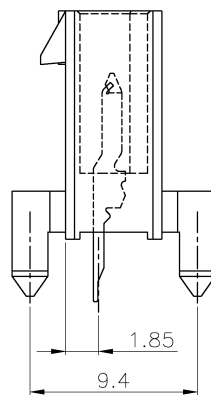
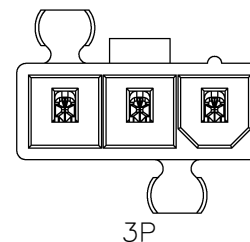
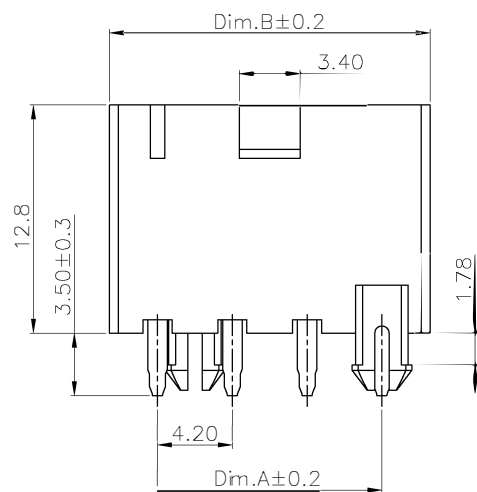
## Materials:

Insulator:Nylon 66 UL94V-0 or UL94V-2  
Insulator Color:Transparent or White  
Terminal:Brass  
Plating:Tin Plated

## How To Order:

2266SA-XX-PG-XX

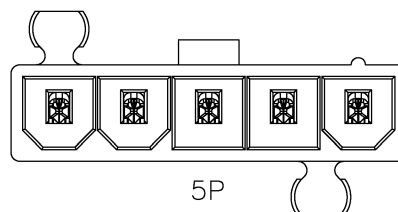
V0:UL94V-0  
Blakb V2:UL94V-2(Standard)  
PG:With post  
No of Contacts  
Single Row  
Straight Type



RECOMMENDED P.C.B LAYOUT  
THICKNESS=1.78 MAX.

## Dimension Information:

Pos.	Dim.A	Dim.B
02	4.20	9.60
03	8.40	13.80
04	12.60	18.00
05	16.80	22.20



RoHS Compliant

DRAWN:  
Andrew

GENERAL TOLERANCE:

.X=±0.40  
.XX=±0.30



# Neltron Industrial Co., Ltd.

C 29-JUN-2020 ECO-TW200004 Jamie Wang

CHECKED:  
Jeremy Liu

UNIT: MM

DESCRIPTION:

SIZE

B 27-Nov-2008 ECN-CN081144 Andrew

SCALE: 1:1

4.20mm Power Wafer Single Row Straight Type(With post)

# A4

A 02-Sep-2008 Mike Wu

APPROVAL:  
Mike Wu

SHEET: 1 / 1

PART NO:

2266SA-XX-PG-XX

REV DATE FILE BY

PROJECTION: