

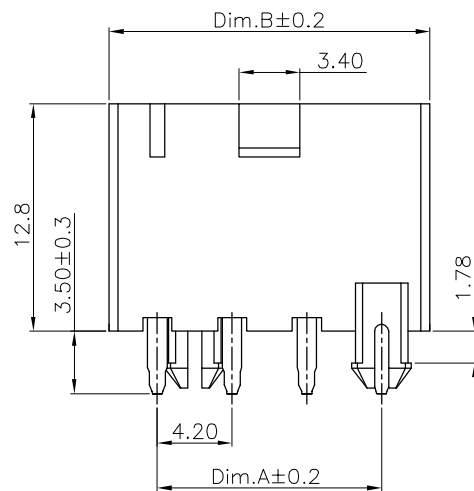
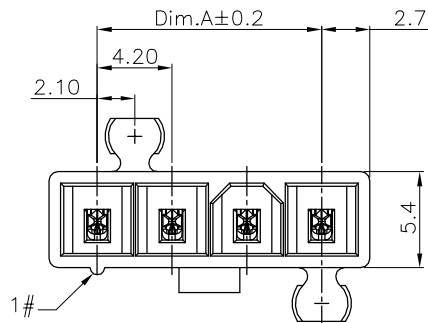
1

2

3

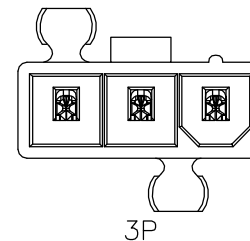
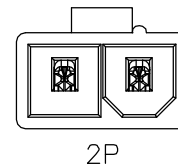
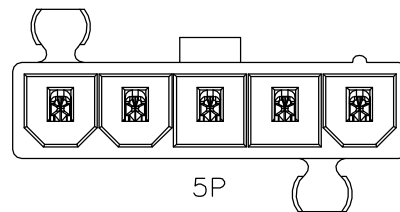
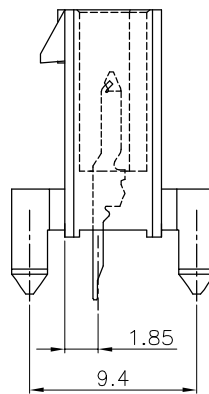
4

5



Dimension Information:

Pos.	Dim.A	Dim.B
02	4.20	9.60
03	8.40	13.80
04	12.60	18.00
05	16.80	22.20

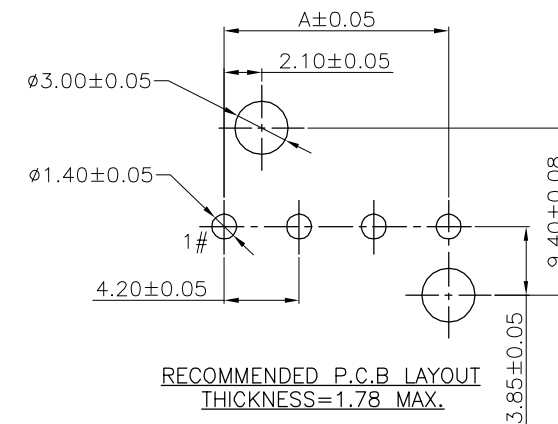


Specifications:
 Current Rating: 9.0A AC/DC
 Voltage Rating: 600V AC/DC
 Contact Resistance: 10m ohm. Max.
 Insulation Resistance: 1000M ohm. Min.
 Withstanding Voltage: 1500V AC For One Minute
 Operating Temperature Range: -40°C To +105°C

Materials:
 Insulator: Nylon 66 UL94V-0
 Insulator Color: White
 Terminal: Brass
 Plating: Matte Tin Plated

How To Order:
 2266SA-XX-PG-V0-F4A

UL94V-0
 PG: With post
 No of Contacts
 Single Row
 Straight Type



active

RoHS Compliant

DRAWN:

MEI

GENERAL TOLERANCE:

.X = ± 0.40
 .XX = ± 0.30



Neltron Industrial Co., Ltd.

CHECKED:

JERRY

UNIT: MM

DESCRIPTION:

4.20mm Power Wafer Single Row Straight Type (With post)

SIZE

APPROVAL:

RORY

SCALE: 1:1

PART NO:

2266SA-XX-PG-V0-F4A

A4

A 28-Jul-2016

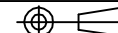
REV DATE

FILE

MEI

BY

PROJECTION:



A

B

C

D