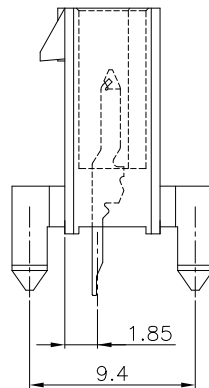
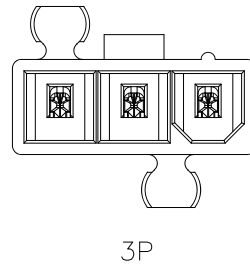
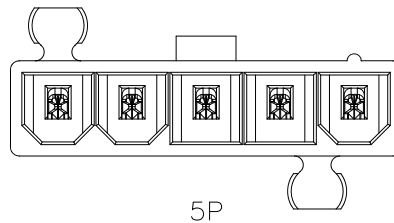


Dimension Information:

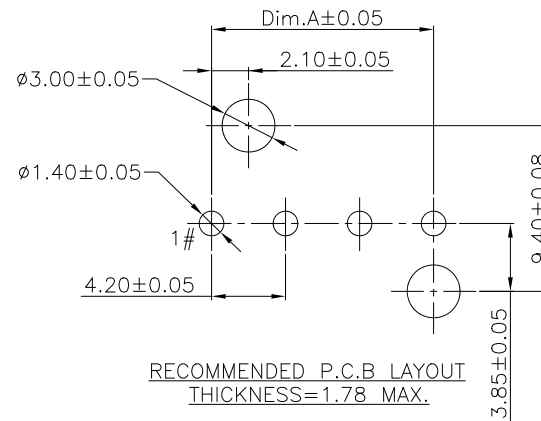
Pos.	Dim.A	Dim.B
03	8.40	13.80
04	12.60	18.00
05	16.80	22.20



Specifications:  
 Current Rating:9.0A AC/DC  
 Voltage Rating:600V AC/DC  
 Contact Resistance:10m ohm. Max.  
 Insulation Resistance:1000M ohm. Min.  
 Withstanding Voltage:1500V AC For One Minute  
 Operating Temperature Range:-40°C To +105°C

Materials:  
 Insulator:Nylon 66 (UL94V-0 or UL94V-2)  
 Insulator Color:Transparent or White  
 Terminal:Brass  
 Plating:Matte Tin/Selective Gold Plated  $\triangle E$

How To Order:  
 2266SA-XXX-PG-XX  $\triangle E$   
 Blank UL94V-2(Transparent)  
 V0:UL94V-0(White)  
 PG:With Post  
 Blank Matte Tin Plated  
 SG30:Gold Plated 30u" On Contact Area,  $\triangle E$   
 Matte Tin Plated On Solder Tail.  
 No. Of Contacts  
 Straight Type & Single Row



RECOMMENDED P.C.B LAYOUT  
 THICKNESS=1.78 MAX.

RoHS Compliant

F				DRAWN:	GENERAL TOLERANCE: $\triangle C$	<b>Neltron Industrial Co., Ltd.</b>	DESCRIPTION: 4.20mm Power Wafer Single Row Straight Type(With Post)	SIZE <b>A4</b>
E	27-DEC-2023	Add Plated Option	Lucy Du	Andrew	.X=±0.40 .XX=±0.30			
D	13-JAN-2022	Delete 2P	Mei	CHECKED:	UNIT: MM	PART NO: 2266SA-XXX-PG-XX $\triangle E$		
C	29-JUN-2020	ECO-TW200004	Jamie Wang	Jeremy Liu	SCALE: 1:1			
B	27-NOV-2008	ECN-CN081144	Andrew	APPROVAL:	SHEET: 1/1			
A	02-SEP-2008		Andrew	Mike Wu	PROJECTION:			
REV	DATE	FILE	BY					