

1

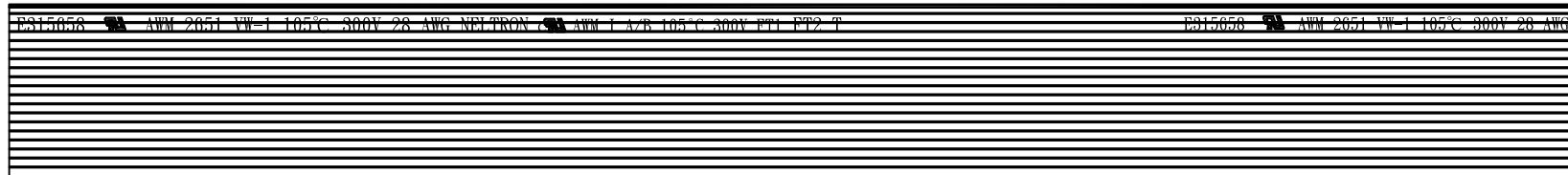
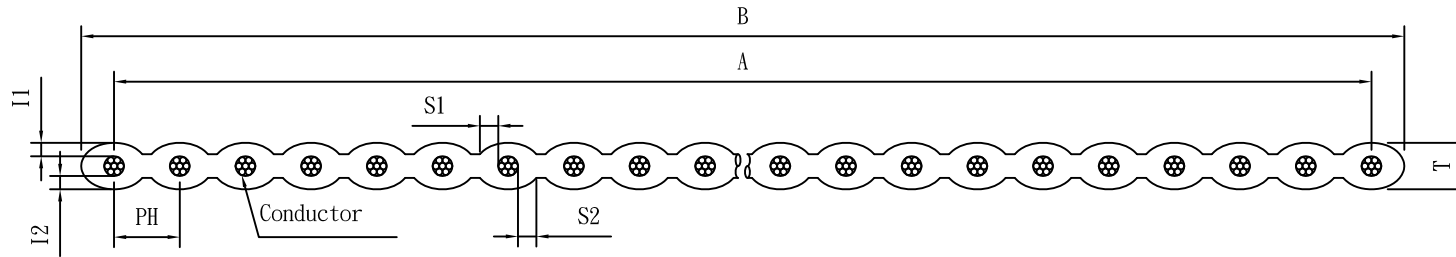
2

3

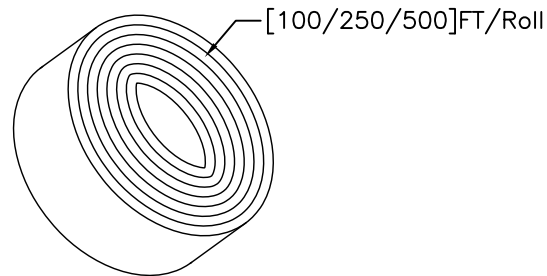
4

5

RoHS COMPLIANT



MARKING: E315658 AWM 2651 VW-1 105°C 300V 28 AWG NELTRON AWM I A/B 105°C 300V FT1 FT2 T



[100/250/500]FT/Roll

830-127-XXC-XXX

Blank: 100Feet/Roll
250: 250Feet/Roll
500: 500Feet/Roll
Number Pin
1.27mm Pitch Type

Code NO.	A(mm)	B(mm)	Code NO.	A(mm)	B(mm)	CONDUCTOR SIZE: 28AWG 7/0.12MM ₀ ^{+0.003}
830-127-04C-XXX	3.81±0.10	5.08±0.10	830-127-22C-XXX	26.67±0.15	27.94±0.15	PH: 1.27±0.08mm
830-127-06C-XXX	6.35±0.15	7.62±0.15	830-127-24C-XXX	29.21±0.15	30.48±0.15	T: 0.90±0.10mm
830-127-08C-XXX	8.89±0.15	10.16±0.15	830-127-25C-XXX	30.48±0.15	31.75±0.15	[I2-I1]=I<0.15mm
830-127-09C-XXX	10.16±0.15	11.43±0.15	830-127-26C-XXX	31.75±0.15	33.02±0.15	[S2-S1]=S<0.15mm
830-127-10C-XXX	11.43±0.15	12.70±0.15	830-127-30C-XXX	36.83±0.15	38.10±0.15	
830-127-12C-XXX	13.97±0.15	15.24±0.15	830-127-34C-XXX	41.91±0.20	43.18±0.20	
830-127-14C-XXX	16.51±0.15	17.78±0.15	830-127-36C-XXX	44.45±0.20	45.72±0.20	
830-127-15C-XXX	17.78±0.15	19.05±0.15	830-127-40C-XXX	49.53±0.20	50.80±0.20	
830-127-16C-XXX	19.05±0.15	20.32±0.15	830-127-50C-XXX	62.23±0.20	63.50±0.20	
830-127-18C-XXX	21.59±0.15	22.86±0.15	830-127-60C-XXX	74.93±0.20	76.20±0.20	
830-127-20C-XXX	24.13±0.15	25.40±0.15	830-127-64C-XXX	80.01±0.20	81.28±0.20	

active

F			
E			
D			
C			
B			
A	27-Mar-2015		Jerry
REV	DATE	FILE	BY

DRAWN:	Jerry Chen
CHECKED:	
APPROVAL:	Jerry
	Mike Wu

GENERAL TOLERANCE:	.X=±0.2 .XX=±0.15
UNIT:	MM
SCALE:	
SHEET:	1 / 1
PROJECTION:	

	Neltron Industrial Co., Ltd.
DESCRIPTION:	FLAT CABLE ASSEMBLY
PART NO:	830-127-XXC-XXX

SIZE	A4
------	-----------