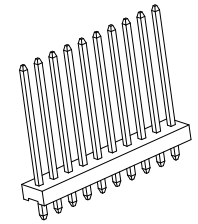
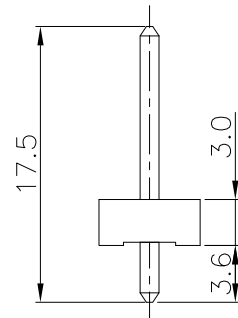
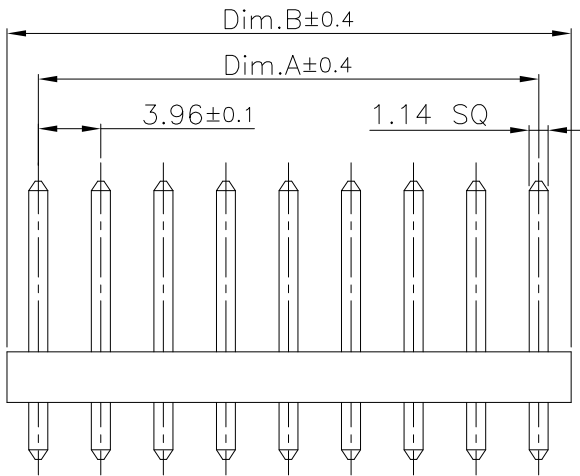
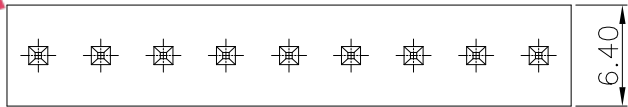


active



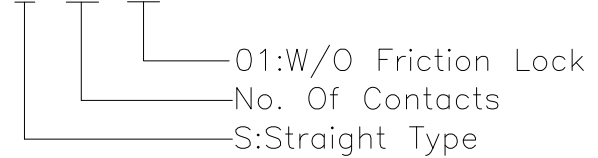
Specifications:

Current Rating:7.0A AC/DC
 Voltage Rating:250V AC/DC
 Contact Resistance:10m ohm. Max.
 Insulation Resistance:1,000M ohm. Min.
 Withstanding Voltage:1,500V AC For One Minute
 Operating Temperature Range:-40°C ~ +105°C

Material and Finish:

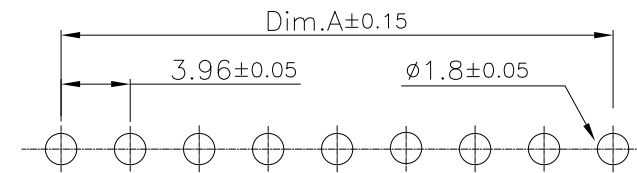
Insulator:Nylon66 (UL94V-2)
 Insulator Color:Transparent White
 Terminal :Brass
 Plating:Tin Plated

How To Order
 2219S-XX-01



Dimension:

Pos	Dim. A	Dim. B	Pos	Dim. A	Dim. B	Pos	Dim. A	Dim. B
2	3.96	7.92	9	31.68	35.64	16	59.40	63.36
3	7.92	11.88	10	35.64	39.60	17	63.36	67.32
4	11.88	15.84	11	39.60	43.56	18	67.32	71.28
5	15.84	19.80	12	43.56	47.52	19	71.28	75.24
6	19.80	23.76	13	47.52	51.48	20	75.24	79.20
7	23.76	27.72	14	51.48	55.44			
8	27.72	31.68	15	55.44	59.40			



P.C.B. Layout

RoHS Compliant

				DRAWN: Jamie Wang	GENERAL TOLERANCE: .X=±0.2 .XX=±0.15	Neltron Industrial Co., Ltd.	
D				CHECKED: Jerry Chen	UNIT: MM		DESCRIPTION: 3.96mm Wire to Board Wafer Straight Type
C				APPROVAL: Rory Chen	SCALE:	PART NO: 2219S-XX-01	A4
B					SHEET: 1 / 1		
A	27-Dec-2018		Jamie Wang		PROJECTION:		
REV	DATE	FILE	BY				