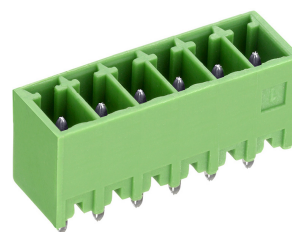


STL1550/..G-3.5-V-GREEN



Technical Data

Wire Sizes	Insulating Material
Solid min -	Material PA 6.6
solid max -	Flammability Class UL 94 V-0
Stranded (flexible) -	Temperatures
min	Operating Temperature -30 °C - 105 °C
Stranded (flexible) -	Wave Soldering Process
max	Soldering Temperature, recommended 265 °C
Stranded with Ferrule -	Peak Soldering Time, recommended 3-4 s
min	Reflow Process
Stranded with Ferrule -	Soldering Temperature, recommended -
max	Peak Soldering Time, recommended -
Dimensions	
Stripped Length	
PCB Hole Diameter 1.2 mm	
Materials	
Contact Pin	Copper Alloy

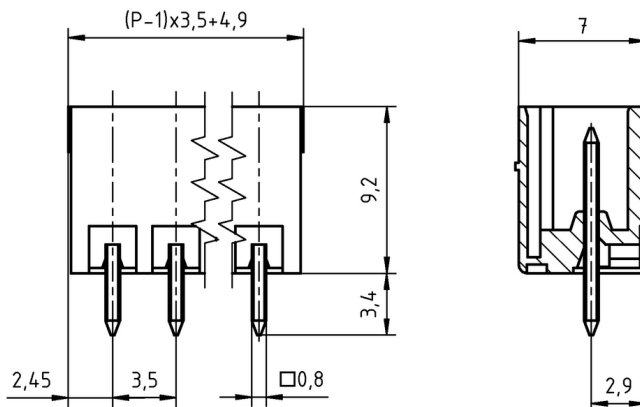
Colours

	GREEN, RAL6018
	BLACK, RAL9011
	BASALT GREY, RAL7012
	LIGHT GREEN, similar RAL 6018

Colours according to RAL, there may be variations on colour due to production conditions. Special colours on request.

Counterparts (Spacing 3.5 mm)

Pin Strip/Terminal Blocks			
AK1550	AK4561	AK1700	AK4551



Order Data (Spacing 3.5 mm)

Poles	Width (mm)	Article Designation	Article Number	PU
2	8.40	STL1550/2G-3.5-V-GREEN	51550025101F	200
3	11.90	STL1550/3G-3.5-V-GREEN	51550035101F	200
4	15.40	STL1550/4G-3.5-V-GREEN	51550045101F	200
5	18.90	STL1550/5G-3.5-V-GREEN	51550055101F	200
6	22.40	STL1550/6G-3.5-V-GREEN	51550065101E	100
7	25.90	STL1550/7G-3.5-V-GREEN	51550075101E	100
8	29.40	STL1550/8G-3.5-V-GREEN	51550085101D	50
9	32.90	STL1550/9G-3.5-V-GREEN	51550095101D	50
10	36.40	STL1550/10G-3.5-V-GREEN	51550105101D	50
11	39.90	STL1550/11G-3.5-V-GREEN	51550115101D	50
12	43.40	STL1550/12G-3.5-V-GREEN	51550125101D	50
13	46.90	STL1550/13G-3.5-V-GREEN	51550135101D	50
14	50.40	STL1550/14G-3.5-V-GREEN	51550145101D	50
15	53.90	STL1550/15G-3.5-V-GREEN	51550155101D	50
16	57.40	STL1550/16G-3.5-V-GREEN	51550165101D	50
17	60.90	STL1550/17G-3.5-V-GREEN	51550175101D	50
18	64.40	STL1550/18G-3.5-V-GREEN	51550185101D	50
19	67.90	STL1550/19G-3.5-V-GREEN	51550195101D	50
20	71.40	STL1550/20G-3.5-V-GREEN	51550205101D	50

Accessories

Figure	Designation	Article Number
	Coding star CS1-3.5/3.81-RED	50000000023

Ratings



Usegroup	B	C	D	
Rated Voltage	300 V	-	300 V	160 V
Rated Current	8 A	-	8 A	9 A
Overvoltage Category				III
Test Voltage	1.6 kV	-	1.6 kV	2.5 kV
Pollution Degree				3