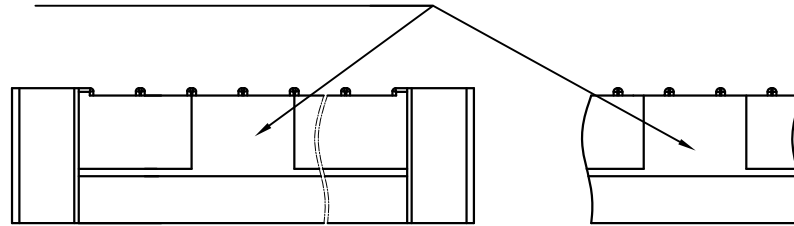
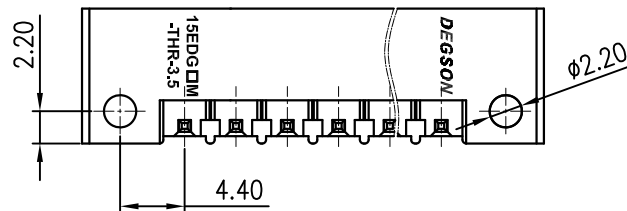
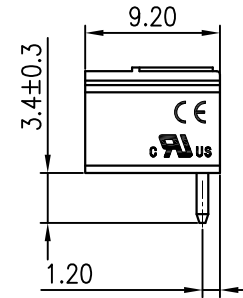
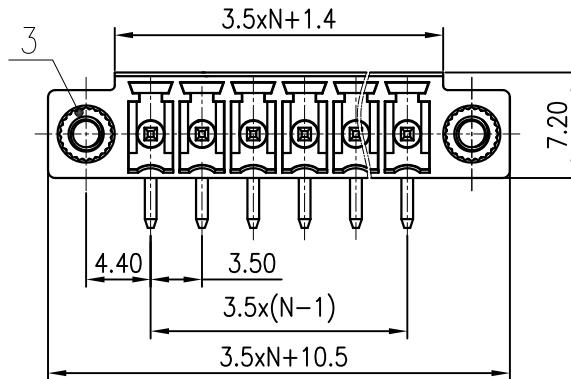
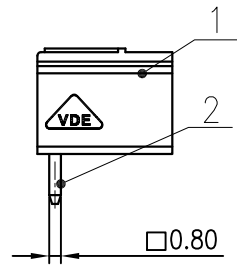
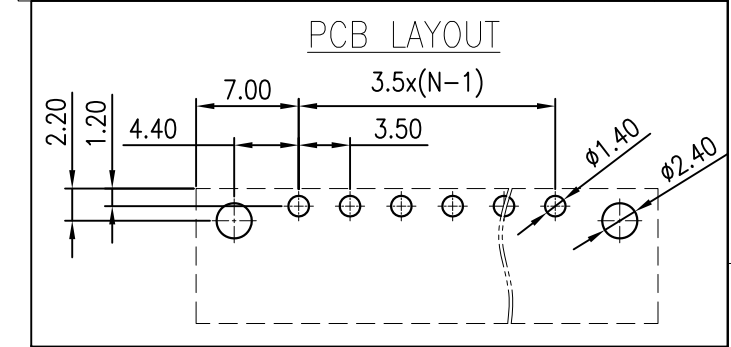




The pad is positioned centrally above the existing positions



未注公差/General tolerances(mm)													
0	>3	>6	>10	>18	>30	>50	>80	>120	>180	>250	>315	>400	0.1/10 ±2'
~3	~6	~10	~18	~30	~50	~80	~120	~180	~250	~315	~400	~500	
±0.12	±0.18	±0.22	±0.26	±0.31	±0.37	±0.57	±0.80	±0.93	±1.05	±1.15	±1.60	±2.20	±2.50



3	Screw cap	Copper alloy	
2	Pin	Copper	Sn Plated
1	Housing	Thermoplastic	UL94V-0
ITEM	NAME OF PART	MATERIAL	NOTES

UL 标准/UL Standard:		B
额定电压/电流/Rated Voltage(V)/Current(A)		300/8
IEC 标准/IEC Standard:		
过压类别/Overvoltage Category/污染等级/Pollution Degree		II/2
额定电压/电流/Rated Voltage(V)/Current(A)		250/8
额定脉冲电压(KV)/Rate Impulse Voltage(KV)		2.5
间距/Pitch(mm)/线数范围/Poles		3.5/N=02~12P
使用温度范围/Operating temperature(°C)		-40~+130
符合RoHS环保要求/Conform to RoHS		Yes

MATERIAL:		SURFACE:	
MAT NO.:	/	宁波高松电子有限公司 NINGBO DEGSON ELECTRICAL CO., LTD	
STATUS:	/		
APPD: Lan ChH 2020.05.25	NAME:	15EDGRM-THR-3.5-XXP-1Y-10A(H)	
CHKD: Yu JZh 2020.05.25			
DRFT: Li Zh 2020.05.25	DRAWING NO.:	15EDGRM-THR-3.5-C01	REV T1
⊕	SIZE: A4	TYPE: CUSTOMER DRAWING	SCALE: 2:1 SHEET 1/1

REV	ECN	DESCRIPTION	DRFT	DATE