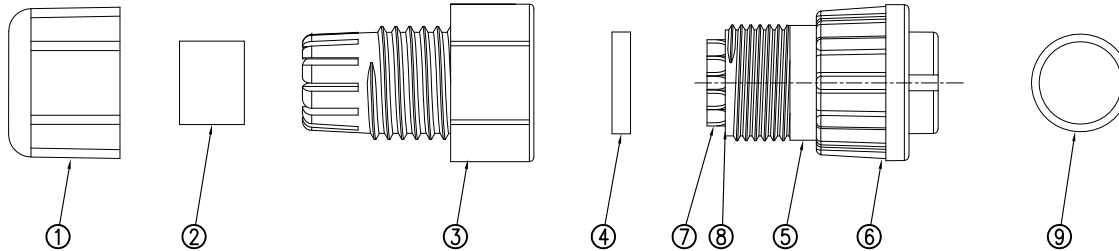
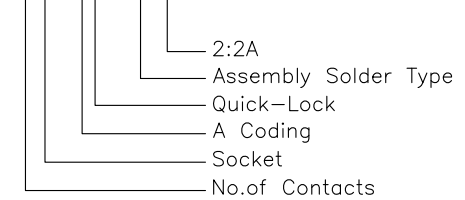
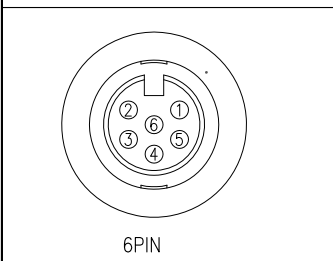


Specifications:
 Current Rating:2A
 Contact Resistance:30m ohm. Max.
 Insulation Resistance:100M ohm. Min.
 Withstanding Voltage:500V AC/Minute
 Operating Temperature Range:-40°C ~ +105°C
 Waterproof Rate:IP67
 Durability:500 Cycles Min.
 Material and Finish
 See Table

How to Order
 120511-06S-A02-AS2A



Pin Assignments Front View



ITEM	Description	Material	Remark	Q'TY
1	Sealing NUT	PPE	Black	1
2	Seal	EPDM	Black	1
3	Clamp Ring	PPE	Black	1
4	Gasket	Silicone	Black	1
5	Insulator	Nylon+GF	Black	1
6	Lock NUT	Nylon+GF	Black	1
7	Female Pin	Phosphor Bronze	6u"Gold Plated Over Nickel	6
8	Liquid glue	N/A	Black	A/R
9	O-Ring	EPDM	Black	1

RoHS Compliant

F			
E			
D			
C			
B			
A	19-Feb-2019	Joy Liu	
REV	DATE	FILE	BY

DRAWN: Joy Liu	GENERAL TOLERANCE: .X=±0.3 .XX=±0.20 .XXX=±0.10
CHECKED: Andrew	
APPROVAL: Bill He	UNIT: MM
	SCALE: 1:1
	SHEET: 1/1
	PROJECTION:

Neltron Industrial Co., Ltd.

DESCRIPTION: M11 A CODE SOCKET ASSEMBLY SOLDER TYPE

PART NO: 120511-06S-A02-AS2A

SIZE: **A4**