

Specifications:

Current Rating:0.5A AC/DC
 Voltage Rating:50V AC/DC
 Contact Resistance:20m ohm. Max.
 Insulation Resistance:50M ohm. Min.
 Withstanding Voltage:500V AC For One Minute
 Operating Temperature Range:-25°C~+85°C

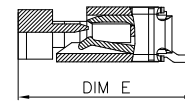
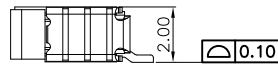
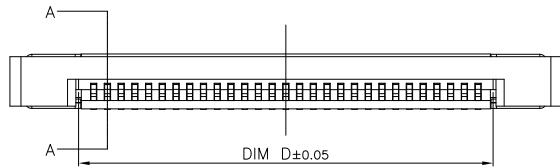
Material and Finish

Insulator:High Temp. Plastic (LCP UL94V-0)
 Insulator Color:Natural.
 Latch:High Temp. Plastic (LCP UL94V-0)
 Latch Color:Black
 Terminal:Copper Alloy
 Plating:Matte Tin Plated

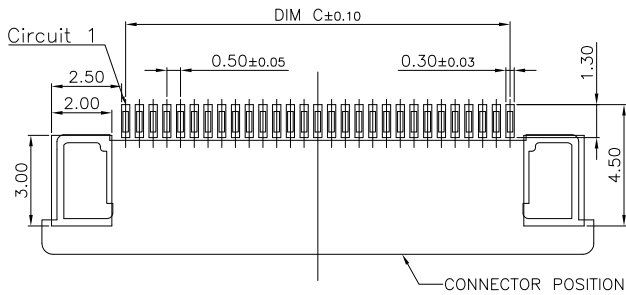
How To Order

1226-XX-02-TR

└─ Tape&Reel
 └─ Bottom Contact Type
 └─ No Of Contacts



SECTION A-A
SCALE 1:1



RECOMMENDED P.C.B PATTERN LAYOUT

Contacts Dimension:

PIN NO	A	B	C	D	PIN NO	A	B	C	D	PIN NO	A	B	C	D	PIN NO	E
4	7.60	6.50	1.50	2.60	19	15.10	14.00	9.00	10.10	34	22.60	21.50	16.50	17.60	4-34	5.20
5	8.10	7.00	2.00	3.10	20	15.60	14.50	9.50	10.60	35	23.10	22.00	17.00	18.10	35-40	5.70
6	8.60	7.50	2.50	3.60	21	16.10	15.00	10.00	11.10	36	23.60	22.50	17.50	18.60		
7	9.10	8.00	3.00	4.10	22	16.60	15.50	10.50	11.60	37	24.10	23.00	18.00	19.10		
8	9.60	8.50	3.50	4.60	23	17.10	16.00	11.00	12.10	38	24.60	23.50	18.50	19.60		
9	10.10	9.00	4.00	5.10	24	17.60	16.50	11.50	12.60	39	25.10	24.00	19.00	20.10		
10	10.60	9.50	4.50	5.60	25	18.10	17.00	12.00	13.10	40	25.60	24.50	19.50	20.60		
11	11.10	10.00	5.00	6.10	26	18.60	17.50	12.50	13.60							
12	11.60	10.50	5.50	6.60	27	19.10	18.00	13.00	14.10							
13	12.10	11.00	6.00	7.10	28	19.60	18.50	13.50	14.60							
14	12.60	11.50	6.50	7.60	29	20.10	19.00	14.00	15.10							
15	13.10	12.00	7.00	8.10	30	20.60	19.50	14.50	15.60							
16	13.60	12.50	7.50	8.60	31	21.10	20.00	15.00	16.10							
17	14.10	13.00	8.00	9.10	32	21.60	20.50	15.50	16.60							
18	14.60	13.50	8.50	9.60	33	22.10	21.00	16.00	17.10							

RoHS Compliant

F				DRAWN: Jerry Chen
E				
D				CHECKED:
C	17-Jan-2019	圖面更新	Jamie Wang	
B	03-Jan-2017	圖面更新	Jamie Wang	APPROVAL:
A	07-Dec-2016		Jerry Chen	
REV	DATE	FILE	BY	Mike Wu

GENERAL TOLERANCE:
 .X=±0.2
 .XX=±0.15



Neltron Industrial Co., Ltd.

UNIT: MM
 SCALE: 1 : 1
 SHEET: 1 / 1
 PROJECTION:

DESCRIPTION:
 0.5mm FPC Connector Bottom Contact Type

PART NO:
 1226-XX-02-TR

SIZE
A4