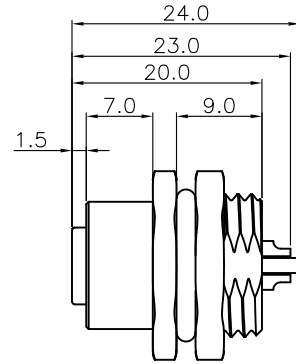
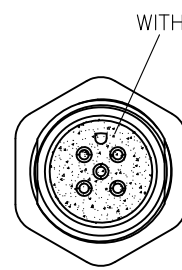


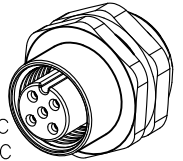
2, 3, 4, 6, 7, 9P



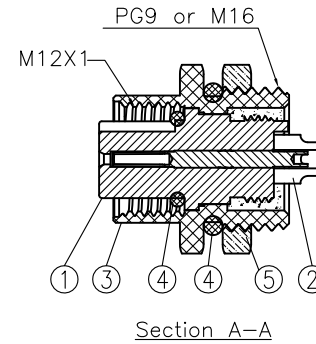
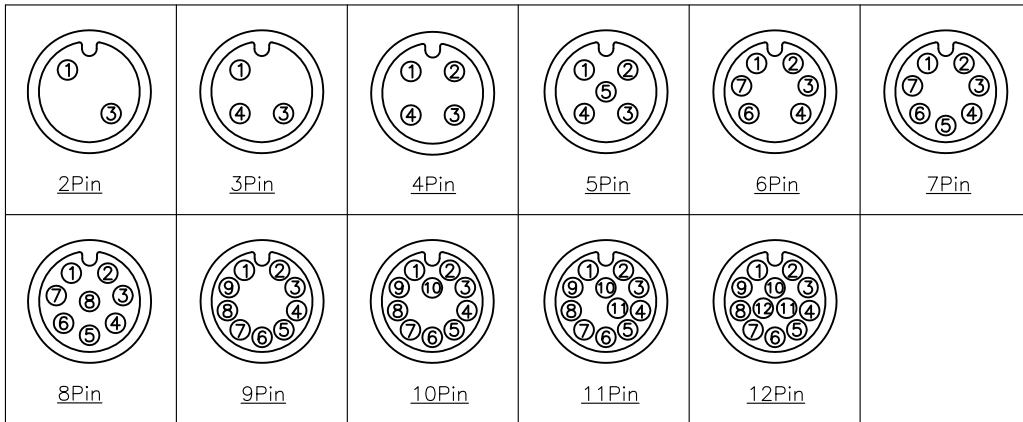
5, 8, 10, 11, 12P



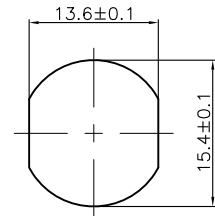
Specifications:
 Current Rating: 4A(2~5P); 2A(6~8P); 1.5A(9~12P) AC/DC
 Voltage Rating: 250V(2~4P); 60V(5P); 30V(6~12P) AC/DC
 Contact Resistance: 5m ohm. Max.
 Insulation Resistance: 100M ohm. Min.
 Withstanding Voltage: 500V AC/Minute
 Waterproof rate: IP67
 Operating Temperature Range: -40°C ~ +100°C
 Material and Finish
 See Table
 How to Order
 120512-XXS-RAXX-PMXXXXX



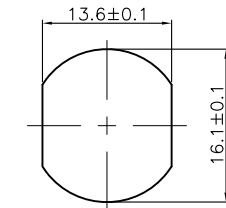
B Pin Assignments Front View



- Blank: Gold Plated 3u"
- 10: Gold Plated 10u"
- Blank: Silicone
- EP: EPDM
- Panel Lock Thread
- 1: PG9
- 2: M16
- Panel Mount Solder
- Blank: Copper Alloy Thread
- 08: Stainless Steel Thread
- Rear Fastened A Coding
- Socket
- No. of Contacts
- M12



PG9 Recommended Panel CUT-Out
Thickness: 4.0mm



M16 Recommended Panel CUT-Out
Thickness: 4.0mm

ITEM	Description	Material	Remark	Q'TY
1	Insulator	Nylon66	UL94V-0 Black	1
2	Terminal	Copper Alloy	Gold Plated 3u"	2~12
3	Shell	Copper Alloy	Nickel Plated 60u"	1
		Stainless Steel(SUS303)	钝化处理	
4	Seal ring	Silicone	Red	2
		EPDM	Black	
5	Nut	Copper Alloy	PG9 or M16 Nickel Plated 60u"	1

RoHS Compliant

F				DRAWN:	GENERAL TOLERANCE:
E				Julian	.X=±0.3 .XX=±0.2
D				CHECKED:	UNIT: MM
C	17-Sep-2020	增加不锈钢外壳, EPDM防水圈, 镀金10u"	Andrew	Bill He	SCALE: 1:1
B	07-Sep-2020	add 2P, 6~7P, 9~12P option	Andrew		SHEET: 1/1
A	09-Jan-2018		Julian	APPROVAL:	PROJECTION:
REV	DATE	FILE	BY	Norman	

DESCRIPTION:	M12 A CODE SOCKET REAR FASTENED SODLER TYPE
PART NO:	120512-XXS-RAXX-PMXXXXX



A4

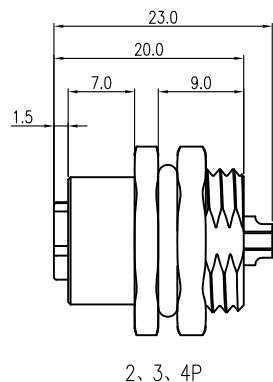
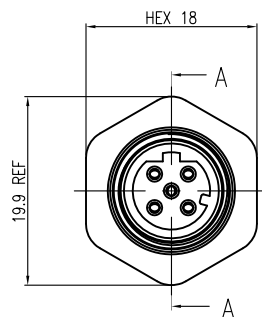
1

2

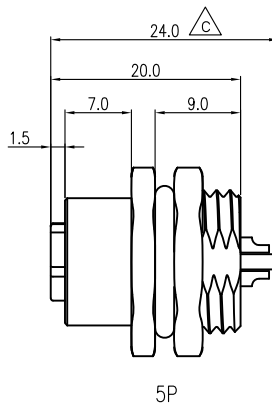
3

4

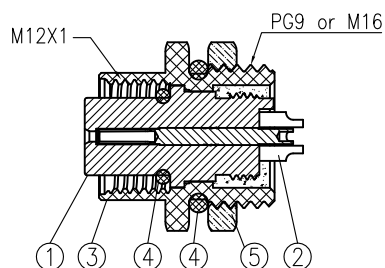
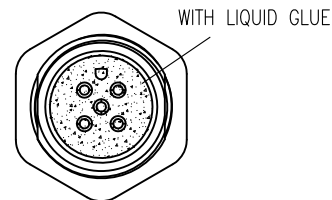
5



2, 3, 4P



5P



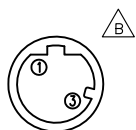
Section A-A

Specifications:
 Current Rating:4A AC/DC B
 Voltage Rating:250V(2~4P);60V(5P)AC/DC
 Contact Resistance:5m ohm. Max.
 Insulation Resistance:100M ohm. Min.
 Withstanding Voltage:500V AC/Minute
 Waterproof rate:IP67
 Operating Temperature Range:-40°C ~ +100°C
 Material and Finish
 See Table
 How to Order
 120512-XXS-RD-PMX

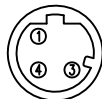


Panel Lock Thread
 1:PG9
 2:M16
 Panel Mount Solder
 Rear Fastened D Coding
 Socket
 No.of Contacts
 M12

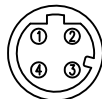
Pin Assignments Front View



2Pin



3Pin

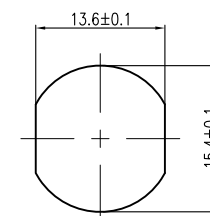


4Pin

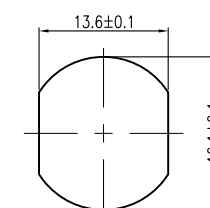


5Pin

ITEM	Description	Material	Remark	Q'TY
1	Insulator	Nylon	UL94V-0 Black	1
2	Terminal	Copper Alloy	Gold Plated 3u"	2~5
3	Shell	Copper Alloy	Nickel Plated 60u"	1
4	Seal ring	Silicone	Red	2
5	Nut	Copper Alloy	PG9 or M16 Nickel Plated 60u"	1



PG9 Recommended
 Panel CUT-Out
 Thickness:4.0mm



M16 Recommended
 Panel CUT-Out
 Thickness:4.0mm

RoHS Compliant

REV	DATE	FILE	BY
F			
E			
D			
C	19-Aug-2020	区分5P尺寸	Joy Liu
B	12-Aug-2020	增加2P, 修改电器特性	Andrew
A	16-Jan-2018		Julian

DRAWN:
Julian

CHECKED:
Bill He

APPROVAL:
Norman

GENERAL TOLERANCE:
 .X=±0.3
 .XX=±0.2

UNIT: MM

SCALE: 1:1

SHEET: 1/1

PROJECTION:



Neltron Industrial Co., Ltd.

DESCRIPTION:
M12 D CODE SOCKET REAR FASTENED SODLER TYPE

PART NO:
120512-XXS-RD-PMX

SIZE

A4